

LEND A HAND AND BRING A CAN!

# LIARS *MODEL CAR BRIEFS*

*Meeting themes:*

*"Annual Christmas party (food provided, members can bring desert and beverages) and run what you've brung!"*

*Discuss further planning for our club, 2026 show, addressing "road bumps"...*



• LONG ISLAND AUTO REPLICA SOCIETY •

MCB NEWSLETTER

CLUB PRESIDENT

CLUB TREASURER

**Richard Manri**  
(631)-589-6876  
picorro93@gmail.com

**Dominick Gerace**  
(631)-834-4223  
Superbird440@juno.com

**Donna Lee Seagraves**  
(516)-384-7288  
dleesea@ymail.com

Been a while since we've seen..





**Scenes from the Nov MTG...**

**NONE! Seriously, who wants to see a bunch of dudes  
Standing and waddling outside waiting for lazy rec center people  
To open the doors, which unfortunately never happened!**

MCB Issue 419

**NEXT MEETING: THURSDAY December 18th @7:30 PM (Weather permitting)**

**The LONG ISLAND AUTO REPLICAS SOCIETY (L.I.A.R.S.) Model Car Briefs is dedicated to bringing you the best and most up to date information about our great hobby of model building.**

**Were in our 34th year as a Club; let's hope we all stay healthy during this post COVID-19 crisis and that we can all attain some measure of prosperity. Then perhaps we can build a new Club display in memory of Rich Argus...**

**LIARS Web Page <https://www.longislandautoreplicasociety.com/> [LIARS- Car Model Building Club | New York](#)**

**LIARS Facebook page <https://www.facebook.com/people/LIARS-Long-Island-Auto-Replica-Society-Model-Car-Club/100057442748403/>**

***MCB Contributors: Richard Manri, Dominick "Mickey" Gerace, Bill "Doc. V" Murray, Aaron Miller (for Petrolicious), Ronnie Schreiber (for Hagerdy), Murilee Martin (for Autoweek),***

### ***From our LIARS Unofficial Official***

**First, I would like to apologize for the November debacle. 30 or more people were left to stand out in the cold waiting for the Recreation Center to open. It never did. Unfortunately the only number I had was for inside the Recreation Center. Apparently this has happened in the past, and I was not there for those events. So, I did not realize I needed another number in case the center did not open.**

**I do have that number now. And we will also be credited a month for next year. If anybody has any advice or suggestions in regards to this sort of thing or anything else that would interfere with our regularly scheduled meetings, please come forward and let me know. I'm still relatively new to this.**

**Now on to better things! This month, we will have our annual Christmas party. Since we did not get to discuss it in November, we will be doing relatively the same thing we did last year, Pizzas, a 6 foot hero and**

**drinks. Members are welcome to bring a dessert of their choice to share. Sorry if this comes off as a "Charlie Brown Christmas" to some of you. But remember, it's all about being with friends and family around the holidays. Don't be a Peppermint Patty, just come and have a good time!**

**As for our finances after the show, which we would have discussed in November, that will be discussed in January with our business meeting. I will try to have a print out, of everything at the December meeting for anybody who wants to pick it up and look it over. But I do not want to eat up time discussing that in December when we should be eating food!**

**If I don't see some of you at the meeting, I'd like to wish you all a merry Christmas and a Happy New Year! Thank you again to everybody! My schedule has been hectic working 16 hour days, I could not have done this without you all!**

**If you have an idea or suggestion to make, please inform our committee**

during meetings or contact our board members via their phones and/or emails. If there are any issues at the meetings or regarding other club matters, please inform us and we will handle them to the best of our extent.

Also, please try to bring a canned good to donate for the center. We've all been guilty for being sporadic about this, but let's think about those who are much less fortunate than us, especially as the holiday is approaching. Also try and bring a wrapped toy for a less fortunate young girl or boy and please mark it as to which gender it is appropriate.

Thank you very much and see you all Thursday!

*Your unofficial official,*  
*Dominick "McMonte" Gerace,*



Remember those folks who made a difference in your life in 2024 (good or bad) and use the lessons learned to be a better you. Life is made up of people, events and decisions. 2025 is a time to start fresh. So surround yourself with good people, be active, happy and make remainder of 2025 great. Richie.

*Some Words from the Editor At Large*

*I apologize for any absences in responding to people. I've been caught up in many things and work.*

*Last month, we had a brief freezing mtg. in the parking lot due to incompetence from the rec center (30 or so of us basically just standing out in the parking lot for about an hour in 30 degrees waiting for the doors to open!). Luckily current leadership has have numbers to call for the rec center and for whoever has the keys to open the building, so this event should not happen again especially going into warm and cold days of the winter months.*

*Unfortunately, there are no mtg build pics this month. To make up for that and the so-called "lackluster" November MCB, yours truly has included various articles for reading enjoyment, or perhaps complain about over and over again!*

*This month is our Chirstmas party, same deal as last year. Bring deserts and whatever else you'd like. No formal build theme ether, just run what you've bring! We will likely discuss all important stuff in Jan if all goes well.*

*Welp, that's all I got for this month!*

*If anyone else have something to contribute or whatever, please do and send it over!*

*See you all Thursday!*

.....

# How Hot Wheels And Slot Cars Prepared Me For Life As A Car Enthusiast

by Aaron Miller –

**AND HERE ARE EIGHT WINNERS THAT WEAR WHITE BOOTS.**

Tycopro racing cars are engineered to win. With their exclusive "trick" pan chassis and hi-torque HT 50 motor, these cars have become the standard for championship speed and handling. Now we're introducing eight great cars with our exclusive White Boots RTV Silicone tires—to give you even better traction, faster acceleration and better cornering at high speeds. These new cars not only perform like winners. They look like winners.

**Gulf Porsche** with operating headlights (8923C) \$5.00

**Ferrari 512M** with operating headlights (8922C) \$5.00

**Beja Bronco** (8920C) \$4.00

**Porsche 914/Racing** (8911C) \$4.00

**Comoro Funny Car** (8930C) \$4.00

**SuperBird** (8933C) \$4.00

**Mustang Funny Car** (8931C) \$4.00

**Lola 260** (8914C) \$4.00

**TYCOPRO**  
ELECTRIC HO RACING CARS

White Boots tires available separately. Set of 4 - 504 Stock #8887.

Some of my earliest memories are of playing with remote controlled cars in the driveway. I was your stereotypical only child with an overabundance of toys, and *almost* all of them were automotive in nature. If you don't know me, it would be easy to think my parents—both car people themselves—systematically brainwashed me to lead a life centered around cars. In reality though, my toys weren't propaganda; they were simply the only things I chose to play with.



I never understood the point of action figures, especially if they were too big to use as crash test dummies in a scale model. Games like Hungry, Hungry Hippos and Chutes and Ladders provided zero intellectual stimulation. Cars were where my imagination lived, and I didn't know it at the time, but the car toys of my formative years truly trained me for life as a car guy later on. They were my building blocks. Give me something with four wheels, and I'd figure out some way to be entertained, even from my

earliest days.

**MATCHBOX CITY**

Carry Case City \$7.44

12-piece Car and Truck Set \$5.66

Vinyl Carry Case opens into 32 x 18-inch play city. Buildings and scenery are vinyl heat-stamped and vacuum formed. Included are highways, overpasses, city blocks, city hospital, lots of auto storage and modern buildings. Closest, car measures about 18x 44 1/4 inches high. Open, about 18x 32 inches long. Cars and trucks not included, sold separately below.

Separate 12-piece Car and Truck Set. Includes Mustang, Buick Royal Silver Shadow, VW Camper, Opel, Comanche with boat, BMW motor, pipe truck, jumbo crane, multi-purpose Unimog truck, excavator, grit spreader, refrigerator truck. 49 N 20975—From England. Shipping weight 1 pound 3 ounces. Set \$5.66

“MATCHBOX” Gas Station Carry Case opens into 17x10x7-inch service area filled with 3-dimensional detail \$2.99

Take along a gangful of cars, trucks (color separated) to the park, beach or a friend's home. Open it and you're the owner of a busy service station, with a pump island, grease rack, display plus truck and fuel parking. Kid-resistant vinyl doors to 18x7 1/2 in. deep. Metal latches. 49 N 2338—Ship. wt. 1 lb. 8 oz. Set \$2.99

“MATCHBOX” Vehicles. Die-cast metal, plastic wheels. 2 to 3 inches. From England.

3-car Set. Doors open on Mercedes and Pontiac. With Ford GT. 49 N 2345—Ship. wt. 5 oz. Set \$1.44

3-truck Set. Includes tow truck (every garage needs one), pickup truck for light hauling, and a bulky gasoline tanker. 49 N 2347—Ship. wt. 6 oz. Set \$1.44

1. “MATCHBOX” Carry Case. Opens into a showcase. 48 slots hold up to 72 cars (not incl.) 3-dimensional vinyl, about 2x1 1/2 inches deep. 49 N 2340—Shipping wt. 3 lbs. 8 oz. Set \$3.66
2. Five Station Set. Drive opens on plastic station for pumps, Cadillac ambulance, fire chief car. 49 N 2342—Shipping weight 1 lb. Set \$4.44
3. Car Transporter Set. Free-standing 8 1/2-in. carrier holds four 2-in. cars. Pontiac G.P., Mark 10 Jaguar Opel Diplomat, Ferrari Bertone. 49 N 2341—Shipping weight 1 lb. Set \$4.44
4. 4-truck Set. Stake truck, refuse truck, maintenance dump truck with wrecker, Dune Buggy tractor, cattle truck and jeep. 49 N 23074—Shipping weight 12 oz. Set \$2.88
5. 6-car Set. Lotus Barchin, Mark 10 Jaguar, “B” Type Jaguar, police car, bus, Ferrari. 49 N 23075—Shipping weight 8 oz. Set \$2.88
6. Race Truck Set. 13x2 1/2-in. cardboard track (capacity of banked turns), grandstand. Wreck truck, 2 Lotus racers, fire pump, 2 Ford GTs, 2 1938 crows, windshield, fire transporter. 49 N 23076—Shipping weight 2 lbs. Set \$6.99
7. Commercial Truck Set. 3 working vehicles (car, rig, tow, load, haul or dump). 49 N 2353—Shipping weight 1 lb. Set \$3.99

**MATCHBOX MOTORISED MOTORWAY**

PUTS ACTION INTO YOUR “MATCHBOX” COLLECTION!

My LEGO kit was extensive, but don't think for one second that's not a car toy. I had streets galore that were perfect for Hot Wheels to drive around on. I built houses, sure, but they were just the oversized garages so many of us wish we owned in adulthood. I had LEGO motors and gears, and I guess I was supposed to build pulley systems or use them to power an oversized space vehicle or some such imaginative build. I used the motorized gears to try to grind paint off my Hot Wheels, which is when I learned that you need the right tools to do the job. While most kids played house, I played paint shop.

## Challenge Dad to a race in the Hot Wheels Grand Prix.



You take the McLaren and give Dad the Chaparral®. Never mind. Let him have the McLaren. Then line up for a run over the most exciting Hot Wheels set yet. Mattel's Super-Charger™ Grand Prix. Each set also contains enough track for two giant courses. Two lap counters. And four authentic Grand Prix Hot Wheels cars. Set up your Hot Wheels Grand Prix today. Then throw out the challenge. See if Dad can stand the pace.

**HOT WHEELS**  
FASTEST METAL CARS IN THE WORLD!

**THE REAL ONE IS HERE!**

**“MATCHBOX” Superfast**

# Challenge any kid to a race on The Hot Wheels® Rod Runner.™



The Rod Runner unit looks like a racing stick shift. But it actually powers your Hot Wheels across the finish line. Shift. They're off. Side by side. You control each lap with a special speed control knob. Careful how you set it. Too much and you could wipe out. Not enough and you might get beat. Here they come. Around the big double-eight track and into the Rod Runner. Shift. Your car is out in front. Takes real skill to win. Just like real racing. Race with Mattel's new Dual-Lane Rod Runner Race set or Rod Runner Speedway set. And race for real.



© 1970 Mattel, Inc. (HOT WHEELS is a registered U.S. Trademark for its TOY CARS.)

# MOVE IT! STEER IT! SHIFT IT! BUILD IT!



NEW LEGO® EXPERT BUILDER SERIES



## YOU'RE BUILDING FOR REAL.

It's here. It's hot. And it's just like real: the new LEGO® Expert Builder™ Dune Buggy. You build it from the ground up. And when you're finished you won't believe your eyes. You've made a Dune Buggy with coil-spring shocks, rack-and-pinion steering, and rugged rubber tires that move like real.

Want to build something else? You can turn the Dune Buggy into a dragster. Or start building for real with one of our 7 other exciting sets.

When you build a LEGO Expert Builder Set, you'll learn something, too. Just how much of an expert you really are.



© 1982 LEGO Group. LEGO®, the LEGO Logo®, and EXPERT BUILDER™ are exclusive trademarks of Interlego A.G.

IT'LL MAKE AN EXPERT OUT OF YOU.

## Hot Wheels STRIP ACTION SET

WATCH 'EM STREAK DOWN THE STRAIGHTAWAY — SIZZLE OVER THE HUMPS — RACE FLAT OUT FOR THE FINISH!

You Get: ■ Hot Wheels Miniature Car with California Custom Styling  
■ Matching Hot Wheels Collector's Button  
■ 10 feet of Hot Strip Track (5 sections)  
■ 5 Joiners ■ Universal Clamp  
■ Hot Wheels International Collector's Catalog

You can make hills over anything — pillows, boxes, books.

**HOT WHEELS GO FASTER—ROLL FARTHER**  
No batteries or electrical current needed. Sets up in Seconds!

## Hot Wheels STUNT ACTION SET

LET 'ER RIP . . . DOWN THE STRIP INTO THE DARE-DEVIL LOOP . . . STREAKING OUT TO A LEAP THROUGH SPACE—OVER & OVER AGAIN!

You Get: ■ Hot Wheels Miniature Car, with California Custom Styling ■ Matching Hot Wheels Collector's Button  
■ 2 Jump Ramps ■ Trestle ■ 16 feet of Hot Strip Track  
■ Dare-Devil Loop ■ 7 Joiners ■ Universal Clamp  
■ Hot Wheels International Collector's Catalog

**HOT WHEELS GO FASTER—ROLL FARTHER**  
No batteries or electrical current needed. Sets up in Seconds!

I had a bunch of 1:18 scale model Ferraris: a 250 GTO; both a 250 Testarossa and a then-new Testarossa; and a 288 GTO were my toys of choice for years. I could pull the tires off and do a pit stop, pretend I was

making the drive of my life on any track I could dream up on the carpet, and they're also the models that taught me the most basic functions of a steering column. Not all whimsy and imagination then, this was my foray into the mechanical world too. I even once took my dad's chamois, cut it, and wrapped it around the same LEGO gear (that absolutely doesn't strip paint), and made my own preschool-aged buffer. I still think back to those days whenever I'm spending an afternoon in my garage now, "playing" with my random orbital. Also in the enduring memory bank is that one time that my mom caught me playing with her nail polish. What a mistake that was: I completely ruined the finish on that poor 250 GTO when I tried to give it a clear coat. Not even my LEGO-chamois buffer could undo my blunder.

By the time I was old enough to crawl up on the kitchen counter, I had a whole new range of scenarios to subject my cars to. I learned so much just by sending Hot Wheels flying down my laminate drag strip. Some would go further than others, some would spin, and others just turned, usually right off the seaside cliff, a role played dutifully by our countertop. It didn't stop there though, as I soon discovered dish soap was the great equalizer, and my new challenge became how far I could get the cars to go in a straight line before they'd spin or *Thelma & Louise* themselves to the floor. I didn't realize it then, and it would be well over another decade before I could even put the lessons to use, but I was teaching myself the basics of countersteering (quite literally). My favorite toys though, by far, were my TYCO slot cars. Long after I stopped playing with it, I measured my kit, and found that I had over a quarter mile of track—a real quarter mile, not scale. I had a ridiculously cool start-finish straight that featured a "tachometer" and a fuel gauge that measured the current and actually deducted "fuel" from your "tank." If it ran out, your car stopped. Otherwise known as the basics of pit strategy.

**FERRARI 250 GTO**

15 Years in the remaking of a classic.

**1/18 ORIGINAL SERIES**

www.bburago.com

**TYCOPRO HO RACING MACHINES**

Take a tip from the Pro's...get the fastest, best handling HO racing cars ever built! The incredible "total performance" race car that's designed and engineered for ALL-OUT competition! All 12 super-detailed... All with exclusive TYCOPRO features!

- Extra-wide competition tires
- Micro-trued mag style wheels
- Low-friction Delrin gears
- Weighted, integrated pan-chassis
- Hi-torque HT-50 motor
- Weighted drop-arm
- Self-centering guide shoe
- Track tested and tuned

OPERATES ON ALL HO TRACKS

READY NOW! \$4.00

TYCO INDUSTRIES, INC., WOODBURY HEIGHTS, N.J., U.S.A. 08097

**BBURAGO**

GT5CAR 88

scale 1/18

cod. 3027 FERRARI GTO (1984)

**Bburago**

theVinTagtoyadvertiser

PREZ PUBLIC MAX. 110,00F

# AND HERE ARE EIGHT WINNERS THAT WEAR WHITE BOOTS.

Tycopro racing cars are engineered to win. With their exclusive "trick" pan chassis and hi-torque HT 50 motor, these cars have become the standard for championship speed and handling. Now we're introducing eight great cars with our exclusive White Boots RTV Silicone tires—to give you even better traction, faster acceleration and better cornering at high speeds. These new cars not only perform like winners. They look like winners.



Gulf Porsche with operating headlights (8823C) \$5.00

Ferrari 512M with operating headlights (8822C) \$5.00

Baja Bronco (8869C) \$4.00

Porsche 914/Racing (8801C) \$4.00

Camaro Funny Car (8830C) \$4.00

Super Bird (8833C) \$4.00

Mustang Funny Car (8811C) \$4.00

Lola 260 (8814C) \$4.00

**TYCOPRO**  
ELECTRIC HO RACING CARS

White Boots tires available separately. Set of 4 - 50¢ Stock #8889.

out that it really did work, but happened so quickly as to not even be remotely satisfying.

**The chase that has no rules!**  
**U-TURN CHASE**  
Electric Racing Set #8112  
NEW!  
Police and Criminal U-Turn cars in a chase that has no rules! Race for your prize money in the most intense race—then the fun of the race isn't over! With the most advanced 1/16" HT motor, these cars will give you more fun than ever! In a hurry race set!  
Capacity: 1/16" Cars • 1/16" Track • 1/16" Weight  
1/16" Weight: 1/16" Police, 1/16" Criminal, 1/16" U-Turn  
• 1/16" Race Controller • 1/16" 1/16" Race Controller  
• 1/16" Race Track, 1/16" U-Turn  
Standard pack • 1/16" weight • 1/16" lbs.  
Package size: 12" x 12" x 20"

As advertised on TV

U-TURN ACTION  
Track Set Complete

CUT-OFF TRACK  
Police Car Control  
Control at Start

**TYCOPRO**  
REAL RACING

Operating Instructions and Competition Tuning Guide

NO. 8830 • FUNNY CAMARO

NO. 8831 • FUNNY MUSTANG

NO. 8801 • PORSCHE CARRERA 908

NO. 8802 • 427 CORVETTE A/P RACING

THE FIRST PROFESSIONALLY DESIGNED HOME RACING LAYOUT

**TYCOPRO HOME RACING SET**—Now... for the first time, a racing set professionally designed and engineered to challenge the racing buff. There's 26 feet of real racing action in this 4 x 8' home layout, with long & straightaway, high-speed banked curve, and realistic handling section. Includes countdown braking markers, guard rail and piers, cornering aprons with hay bales, 2 racing controllers, 2 total-performance TYCOPRO racing cars. No. 8895 \$37.50

NO. 8805 • LAMBORGHINI MIRA

NO. 8806 • FERRARI P-5

NO. 8809 • DUNE BUGGY

NO. 8810 • ISO GRIFFO

**SECOND FOUR READY TO ROAR!**

GROUP 7 GT

DRAG VOLKSWAGEN

427 CORVETTE A/P RACING

ISO GRIFFO

CHAMPAGNE 88

CHAMPAGNE 88

LAMBORGHINI MIRA

**TYCOPRO**  
SEPARATES THE MEN FROM THE TOYS

With the first TOTAL PERFORMANCE racing cars ever designed and engineered for ALL-OUT competition! And you'll know just what that means the second you take command. Try your hand at driving the fastest, best handling machine ever built for HO racing... and get set for a whole new racing experience!

NOW THERE ARE EIGHT!

OPERATE ON ALL HO TRACKS

AUTHENTICALLY DETAILED • EXCLUSIVE SNAP-ON BODIES • FULLY INTEGRATED PAN-CHASSIS • ONLY 4.00  
HI-TORQUE HT-50 MOTOR • TRACK TESTED AND TUNED • Available now at your favorite hobby counter...

TYCO INDUSTRIES, INC., WOODBURY HEIGHTS, N.J., U.S.A. 08097

That's not why I loved my TYCO, though. Playing with those slot cars is how I transitioned from car guy (kid), to a full-grown and full-bore gear head. I was probably five or six years old, maybe seven, when I first sprayed part of the track with Armor All to make it slick. I wanted to do a burnout. I eventually figured



So, I began souping the cars up without knowing what that meant. After hours spent lapping, I noticed that some were faster than others, so I started swapping parts back and forth. Eventually, I figured out that some had softer tires (though that barely mattered), others had motors that spun more freely, or stronger magnets that better kept the car glued to the track. I mixed and matched until I had the best of everything on a single car. I even learned that if I slid the little drive gear out just a little, it would spin the rear wheels more easily. Too far, though, and it would slip. Remove the body entirely, and it would be an order of magnitude quicker. I had never heard of Colin Chapman back then, but I'd just learned the "simplify, and add lightness" lesson all on my own, in my miniaturized automotive world.



I had no idea, obviously, that I'd grow up to spend my free time doing much the same thing with 1:1 scale cars. In many regards, the toys of my childhood are

exactly the same as the toys of my adulthood. They prepared me for life as a grownup car guy, even if I've never fully grown up.

**MATCHBOX CITY**

Carry Case Car \$7.44

12-piece Car and Truck Set \$5.66

Vinyl Carry Case opens into 32 x 18-inch play city. Buildings and scenery are vinyl heat-sealed and vacuum formed. Included are highways, overpasses, fire house, city hospital, lots of auto storage and modern buildings. Closed, case measures about 18x 4x 4 inches high. Open, about 18x33 inches long. Cars and trucks not included, sold separately below. 79 N 20919C—Shipping weight 6 pounds.....\$7.44

Includes Mustang, Bull Rover Silver Shadow, V8 Camper, Owl, Canada with boat, BEM moon pipe truck, Jumbo crane, multi-purpose Unimog truck, excavator, grit spreader, refrigerator truck. 49 N 23076—From England. Shipping weight 1 pound 3 ounces.....Set \$5.66

**Separate 12-piece Car and Truck Set**

Includes Mustang, Bull Rover Silver Shadow, V8 Camper, Owl, Canada with boat, BEM moon pipe truck, Jumbo crane, multi-purpose Unimog truck, excavator, grit spreader, refrigerator truck. 49 N 23076—From England. Shipping weight 1 pound 3 ounces.....Set \$5.66

**"MATCHBOX" Gas Station Carry Case** opens into 17x10x7-inch service area filled with 3-dimensional detail \$2.99

Take along a gangful of cars, trucks (order separately) to the park, beach or to friend's home. Open it and you're the owner of a busy service station with 4 pump island, grease rack, display rack and rear parking. Reinforced vinyl, doors to 10x7.5 in. deep. Metal latches. 49 N 2338—Ship. wt. 1 lb. 4 oz. \$2.99

**"MATCHBOX" Vehicles.** Die-cast metal, plastic wheels, 2 to 3 inches. From England.

3-car Set. Doors open on Mercedes and Austin. With Ford GTZ. 49 N 2345—Ship. wt. 5 oz. Set \$1.44

2-car Set. Includes tow truck (every garage needs one), pickup truck for light hauling, and a bulky gasoline tanker. 49 N 2347—Ship. wt. 6 oz. Set \$1.44

1 "MATCHBOX" Carry Case. Opens into a showcase: 48 stalls hold up to 72 cars (and 18 trucks) Reinforced vinyl, about 20x22 inches deep. 49 N 2340—Shipping wt. 3 lbs. 8 oz. \$3.66

2 Fire Station Set. Doors open on plastic station—fire pump, fire engine, ambulance, fire chief car. 49 N 2342—Shipping weight 1 lb. Set \$4.44

3 Car Transporter Set. Free-wheeling 15-hp carrier hauls four 3-in. cars: Pontiac G.P., Mark 10 Jaguar, Ferrari 250 L, Ferrari 250 GT. 49 N 2341—Shipping weight 1 lb. Set \$4.44

4 6-truck Set. Stake truck, refuse truck, manure spreader, dump truck with snowplow, Snow-Trac tractor, cattle truck and jeep. 49 N 23074—Shipping weight 12 oz. Set \$2.88

5 4-car Set. Lotus Racer, Mark 10 Jaguar, "E" Type Jaguar, police car, bus, Ferrari. 49 N 23072—Shipping weight 8 oz. Set \$2.88

6 Race Truck Set. 3x2.5-in. cardboard truck. Includes 1000cc engine, gearshift, Winch, truck, 2 Lotus racers, live number, 2 Ford GTZs, 2 BEM moon pipe trucks, "Whisper" 1/4 transporter. 49 N 23076—Shipping weight 4 lbs. Set \$6.99

7 Commercial Truck Set. 8 working vehicles can haul, tow, load or unload. 49 N 2353—Shipping weight 1 lb. Set \$3.99

**CORGI TOYS**  
PRECISION DIE-CAST SCALE MODELS

CORGI TOYS (Import) Superb miniature metal die-cast models unsurpassed in detail, realism and quality. Precision 1:43 scale models are beautifully enamelled and include fully detailed interiors with steering wheels, windows, some with reclining seats. Many models include OPENING DOORS, TRUNKS, AND HOODS. With rubber tread wheels and spring suspension. Length 3 1/2" to 10"

A 802-010 BATMOBILE AND BATBOAT. . . . Ship. wt. 2 lbs. 6.00  
Triple rocket firing tubes, Turbo jet exhaust, and Chain Slicer blade are actual working features in 8" long Batmobile. 5 1/2" long Batboat can detachable trailer with stabilizing 4x double cockpit. With Batman and Robin.

B 802-039 MAN FROM U.N.C.L.E. CAR. Wt. 1 lb. \$7.75  
4x4, two swing spotlights, rear view periscope, U.N.C.L.E. agent's joint set of windows and fire shield gun. With "Whisper" Bling!

C 802-148 JAMES BOND ASTON MARTIN. Wt. 1 lb. \$5.50  
Secret instructions with 4" long car reveal 10 opening hidden machine guns, rear bullet-proof screen, remote control ejector seat. With 007 at the wheel, owners badge and "welcome" passenger.

D 802-016 THE JET SET 8.95  
The 3 racing bobs, watch speed!

E 802-017 ACTION TOW TRUCK SET. . . . . Ship. wt. 2 lbs. 7.95  
Twin swinging boom, dual or single operating winches, tilting cab revealing detailed engine. Real working rear view mirrors. Two mechanics help recover Lotus Sports Cars.

F 802-409 SNORKEL FIRE ENGINE. . . . . Ship. wt. 2 lbs. \$7.75  
10" long, adjustable 14 1/2" hydraulic mounting boom, retractable stabilizer, self levelling cable with fireman. 5 firemen ride in the cab.

G 802-019 CIRCUS SET. . . . . Ship. wt. 3 lbs. 9.95  
Two Land Rovers pull two trailers with caged elephant, lions and bears. Circus truck carries two giraffes. Complete with 14 animals.

H 802-020 "BEST IN SHOW" ANIMAL SET Wt. 3 lbs. 7.95  
Land Rover and trailer proudly displays two thoroughbred Dodge truck with opening hood carries livestock, Kennel Club truck accommodates ponies, German Shepherds, Schnauzers, 19 animals.

I 802-018 GRAND PRIX RACING SET. . . . . Ship. wt. 3 lbs. 8.95  
Superb models of the Porsche Carrera, Ferrari Berlinetta, Mercedes 1800 GT, Lotus Elan Sports and Ferrari Formula 1. Opening hoods, doors, trunks: 5 figures.

J 802-021 LINCOLN CONTINENTAL. Ship. wt. 1 lb. 4.00  
5 1/2" Lincoln features built-in toy color TV with slide-in pictures, 4 opening doors, opening hood and trunk, textured roof, jewelled headlights, carpeting. Battery for TV included.

See pages 153 and 154 for ORDER FORMS and SHIPPING CHART. Page 4 for INDEX. 149

Vintage ads courtesy of Hot Wheels, Matchbox,

---

## How plastic model cars stoked interest in their real-life peers—and vice versa

[Ronnie Schreiber](#)

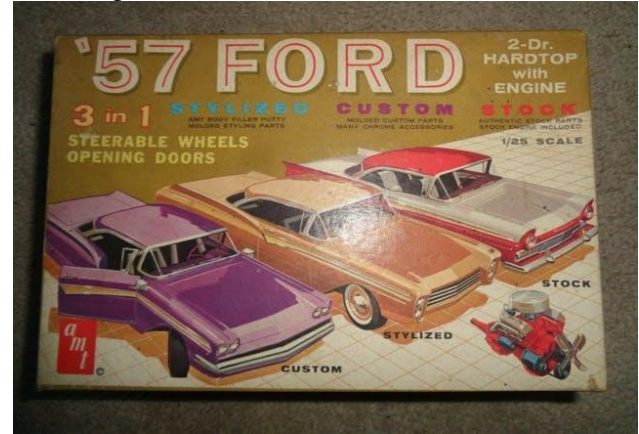
Most car enthusiasts older than about eight years old have likely assembled a plastic scale model car kit at one time or another, though the hobby is long past its golden years of the 1960s. It shouldn't surprise you that like their full-scale siblings, much of the history of plastic scale-model cars took place in and around Detroit. While California's Revell and Chicago's Monogram were major players in the model kit industry, they didn't concentrate on model cars. It was companies in the Detroit area, Jo-Han, AMT, and later MPC, that provided the foundation for the model car kit industry.

While some histories put AMT as the originators of the plastic model car, that acronym actually stands for Aluminum Model Toys, which Detroit attorney West Gallogly Jr. started in 1948 to make cast aluminum scale-model Fords. Gallogly had family connections to Ford, and the models were marketed as promotional items through Ford dealers.

While plastics like celluloid and Bakelite were in use in the first half of the 20th century, the development of acrylic and other more advanced polymers during World War II gave postwar entrepreneurs new materials to use making consumer goods.

Product Miniature Company, known as PMC, was started by brothers Ed and Paul Ford in Milwaukee in 1946. At the time, car dealers gave away promotional metal cars used as coin banks made by companies like Banthrico. PMC made car shaped coin banks, only molded from cellulose acetate. The company had at least some success as the line stayed in production until 1965. Cellulose acetate, however, has a tendency to warp, and the company was slow to embrace styrene-based plastics, which were both more dimensionally stable and also could be molded in finer detail. Perhaps that was why PMC abandoned making

model cars in 1965, at a time when that industry was booming.



[eBay/king4kash2](#)

In between the founding of PMC and AMT, in 1947 a Detroit-based tool and die maker named John Hanley started a company to make promotional advertising specialties and model aircraft. He also made industrial models. Hanley got into making model cars after producing a model of Chrysler's then-new fluid drive automatic transmission used for training mechanics. That led to a contract to produce promotional models of vehicles for the automaker. In the 1950s, automakers came to the conclusion that "the little ones sell the big ones," and just about every brand of cars had promotional scale models, typically in 1:25 scale, that they would ostensibly give away to the children of prospective customers—though the only times my older brother and I got any was *after* our father or grandfather actually bought new cars.

## Marketplace

Buy and sell classics with confidence

[Browse Marketplace](#)

As Ideal Models took off, a potential trademark conflict with the much larger Ideal Toy company was resolved by renaming the company Jo-Han, after Hanley's names. While Jo-Han produced models for Oldsmobile, Cadillac, Studebaker, and American Motors, the company was closely associated with Chrysler. It continued to make plastic promotional

models until 1979, its last promo model being the 1979 Cadillac Coupe de Ville. AMT made promos for Ford, and later MPC would work primarily with General Motors.

**am t** does it again! **A BRAND NEW KIND OF KIT CALLED- Styline**

THE PROFESSIONAL STYLING KIT THE MODEL BUILDER HAS ASKED FOR

**3** NEW STYLING KITS FOR YOUR CHOICE THUNDERBIRD • RANCHERO • GALAXIE

\*Here's one example of how it works in the FALCON RANCHERO STYLING KIT

1. Decide style you want. This example uses Falcon Ranchero.
2. Select parts from kit.
3. Apply body filler putty and sand the surface in preparation for painting.
4. Or, build up new contours with AMT body filler putty and plastic sheet, (see kit parts necessary).
5. Shown are the front-end pieces to install after the body work is completed and the car has been painted.

EACH KIT IS THE BASIS FOR COMPLETELY NEW AND DIFFERENT STYLES TO BE DEVELOPED BY THE BUILDER.

PRICE \$2.00

**AMT Corporation**  
1201 E. WARRIOR ROAD, TROY, MICH 48063

How many styles can you conceive from one kit?

OCTOBER, 1961

*eBay/billwills*

Getting back to West Gallogly, in 1948 he set up AMT in a shop on Detroit's Eight Mile Road. As mentioned, Gallogly was an attorney with a practice to run, so in the early 1950s he hired George Toteff Jr. to run AMT for him. Toteff was a skilled pattern maker with an understanding of manufacturing. He would often say that a model car company was very much like an actual automaker, with many of the same engineering and production departments, they just made smaller cars. During the industry's heyday, it made models of virtually every production car built in America. To get a leg up on competitors, model car kit makers even used industrial spies and possibly even bribes to get early details on new car models yet to be introduced. The design process was the reverse of how the big car companies did it. A typical automotive design studio starts with a sketch, creates a detailed rendering, and then sculpts a scale model, usually in 1:10 scale, before scaling it up to a full-size clay model. At AMT, artists would reproduce the full-scale cars in 1:10 scale, which were then reduced to 1:25 using pantographs. By 1949, modern injection molding presses started proliferating. Plastic bodies could be molded in a spectrum of colors, eliminating the need for painting. In time, Toteff would also implement a method for vacuum deposition of a chrome-looking finish on plastic that is used to this day in the making of brightwork for actual automobiles.

**COLLECT 'EM OR RACE 'EM**  
**AMT'S NEWEST AUTHENTIC 1/32 SCALE "ALL-STARS"**

**STING-RAY** • Go right! Look at the "chrome" goodies... front bumper, spinner hubs, steering wheel, grille, headlamps and many more—plus an authentically detailed interior. A wild, wild star in the new AMT "ALL-STARS" line!

**INDY "500" WINNER** • Detailed speed parts include front and rear wings, high speed rear end, reinforced tie rods and front axle, plus chrome, mer-ble gas cap and exhaust pipes among others! Over 25 authentic 1/32 scale parts!

**'40 FORD** • More than 30 parts. And 8—count 'em—8 live "chrome"—front axle, wishbone assembly, hub caps, head lights, front and rear bumper grille. This ALL STAR also has windows and a highly detailed instrument panel.

**'32 FORD** • 35 authentic 1/32 scale parts. Caps, front bumper, grille, headlights, front, gas filler, rear bumper and wishbone assembly—all these goodies are "chromed".

**'40 FORD SEDAN** • More than 30 parts. And 8—count 'em—8 live "chrome"—front axle, wishbone assembly, hub caps, head lights, front and rear bumper grille. This ALL STAR also has windows and a highly detailed instrument panel.

**'32 FORD COUPE** • 35 authentic 1/32 scale parts. Caps, front bumper, grille, headlights, front, gas filler, rear bumper and wishbone assembly—all these goodies are "chromed".

**Send for new catalog illustrating complete AMT line! Enclose name, address, and 10¢ to cover handling.**

**am t**

Every part fits... in AMT kits! • **AMT CORPORATION** • BOX 81 • TROY, MICH.

*eBay/toymaster12usa*

Gallogly switched to plastic bodies and renamed the company to its acronym, AMT. In the early days of plastic model kits, car bodies were made similarly to how real scale cars were assembled, glued up from different panels. That made alignment and assembly of the bodies fairly difficult for a child. Toteff developed "side sliding" injection molds that allowed the molding of complete, detailed bodies in one piece, greatly simplifying assembly. In 1958, someone at AMT, likely George Toteff, came up with what in retrospect was an obvious, though brilliant idea. The promotional car models were sold to the dealers in ready-to-play form, already assembled. At that time, the West Coast hot rod scene was exploding, and custom car makers like Dean Jeffries, George Barris, and Detroit's Alexander Brothers were putting wild customs on the covers of magazines. Also, at the time, there were the well established model airplane and boat building hobbies. AMT decided to take unassembled promotional models, add some extra parts, including popular automotive accessories like fender skirts and continental kits, and sell them in kit form for the hobby market. They were marketed as "3-In-1" kits that could be assembled three different ways: as a stock production car, some kind of performance or race car, or in customized form. Toteff also figured out that splitting some parts to be molded separately allowed AMT to sell model convertibles and hardtops in the same kits.

One of AMT's early model kits, for a Buick, sold more than a half-million units. By 1959, AMT offered 10 model car kits, including a Corvette, a Lincoln, and an Edsel model that itself may have sold better than the real thing.



*eBay/dukeofdoowop*

While they were not exactly inexpensive—for example, the 1959 3-in-1 Ford retailed for \$1.39, or about \$12.50 in 2020 (a lot of money for a kid)—the new kits were a huge success, essentially creating a new segment in the hobby industry. It should be noted that the hobby market is distinct from that of toys in general. That would create problems decades later when large toy companies bought some model kit makers and tried to market model kits through their traditional toy supply chains.

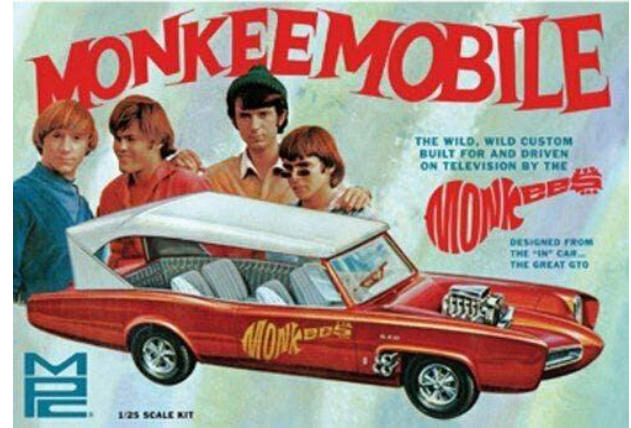
Another innovation of Toteff's was switching from acetate, which warped, to styrene, which was more stable, could mold finer details, and also could be easily assembled with solvent based glues. In 1959 Jo-Han followed AMT's lead, moving to the more durable and stable plastic, and also started making 3-in-1 kits.



*eBay/clap4mee*

As mentioned above, the custom scene was burgeoning, so AMT made licensing deals with many of the leading customizers of the day, including Barris, Jeffries, Bill Cushenberry, and Gene Winfield. Jo-Han countered with accurate, detailed reproductions of NASCAR racers, starting with Richard Petty's 1964 Daytona 500 winning Plymouth.

Around that same time, George Toteff decided to leave AMT to set up his own company, Model Products Corporation, better known as MPC, in Mt. Clemens, Michigan, just north of Detroit. The parting was on amicable terms, and there were deals to license molds and models in both directions. Toteff was also able to keep the license with Dean Jeffries, the result of which was one of the most successful model car kits ever, Jeffries' *Monkeemobile* for the fabricated-four's 1960s television series.



*eBay/heroscamera\_5*

While the model car kit industry thrived in the '60s, a decade later tastes in hobbies had changed. Many of the boys who were active model builders were now teens working on real cars and dating girls, not playing with model kits. Automakers and dealers soured on giving away the relatively expensive, finely detailed promotional models, and after the 1973 oil embargo plastics started getting more costly.

MPC was eventually bought by General Mills, for the food processor's toy division. Wisely, it retained Toteff, who ended up running Lionel trains after General Mills bought that company too. Ever the innovator, Toteff introduced low-friction wheels and needle bearings that allowed Lionel's existing engines to pull longer trains. He also introduced the "sound of steam" sound effects to model trains.

In 1977, AMT was bought out by Lesney, the British maker of Matchbox diecast models, and its facilities were moved out of the Detroit area to Baltimore. In the early 1980s, AMT was saved from brand death when it was sold to modelmaker Ertl, just prior to Lesney's bankruptcy.

When General Mills decided to divest from its core businesses, Ertl also bought MPC. Both MPC and AMT brands then operated under Ertl, which has since sold them to Round 2, in South Bend, Indiana, a company which also owns the Lindberg and Hawk model brands.

Jo-Han stayed in business until 1991 by reissuing models based on their old molds. That year the company was bought by Seville, a Detroit area vendor of plastic parts to the automotive industry, although things didn't work out and Jo-Han models disappeared from shelves for a few years.

In 2000, model enthusiast Okey Spaulding bought the Jo-Han brand and molds from Seville, putting some classic models back into limited production, but that enterprise seems to be now restricted to selling parts, not complete model kits.

George Toteff had some success reviving the Lindberg brand of model kits in the early 1990s, using old molds. He died in 2011 at the age of 85. He once said that the only job he ever had was making models.

Toteff had few equals. Though it has produced many, many millions of model kits, the model car kit industry was actually the product of a small number of men: Gallogly and Toteff at AMT and MPC, Hanley at Jo-Han, Revell's Lew Glaser, and the men who founded Monogram, Jack Besser and Bob Reder.

That small circle created a hobby that has provided countless hours of entertainment for millions of people, young and old.



**AVAILABLE EVERYWHERE!**  
**AUTHENTIC SCALE MODEL CUSTOMS BY** 



**BUILD ANY OF THESE 3 DIFFERENT MODELS FROM 1 KIT**

Man, what a ball . . . customize in miniature just like you want your big car to look some day. Here's a chance to build one of Detroit's bombs just the way you'd like it. These new AMT customizing kits provide all the necessary parts—1/25th actual size. Build it just like the factory does, or for competition on the race track, or as a custom, ready for the car show. There's a choice of most all the sharpest '58 or '59 hardtops or convertibles . . . Ford Fairlane 500's, T-birds, Bonneville's, Impalas, whatever you like.

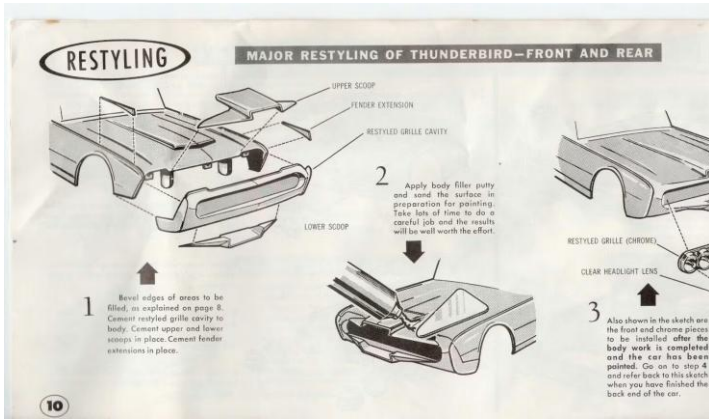



**HERE'S JUST A FEW OF THE AMT LINE. CHECK OFF THE ONES YOU WANT . . . SO YOU WON'T FORGET**

<input type="checkbox"/> '58 CHEV CONV	<input type="checkbox"/> '59 BIRD CONV	<input type="checkbox"/> '58 EDSEL CONV	<input type="checkbox"/> '58 CORV CONV	<input type="checkbox"/> '58 PONTIAC CONV	<input type="checkbox"/> '59 FORD CONV	<input type="checkbox"/> '59 CHEV CONV
<input type="checkbox"/> '59 IMPERIAL CONV	<input type="checkbox"/> '58 EDSEL HOPT	<input type="checkbox"/> '59 PONTIAC HOPT	<input type="checkbox"/> '59 FORD HOPT	<input type="checkbox"/> '58 CHEV HOPT	<input type="checkbox"/> '59 MERC CONV	<input type="checkbox"/>
<input type="checkbox"/> '58 FORD CONV	<input type="checkbox"/> '58 BUICK CONV	<input type="checkbox"/> '59 CORV CONV	<input type="checkbox"/> '59 EDSEL CONV	<input type="checkbox"/> '58 IMPERIAL CONV	<input type="checkbox"/> '58 PONTIAC HOPT	<input type="checkbox"/> '59 BUICK CONV

**REMEMBER: YOU CAN GET THESE KITS AT YOUR NEAREST HOBBY SHOP OR DEPARTMENT STORE EVERYWHERE**  
 if unavailable, write to  
**AMT CORPORATION** 21535 Groesbeck Hwy., East Detroit, Mich.  
 JULY 1959





MURILEE MARTIN

## Car Model Kits of the Legendary Akihabara Yodobashi Store in Tokyo

With thousands of kits on  
the shelves, try to leave  
without buying a few  
dozen!

By [Murilee Martin](#)

With thousands of kits on the shelves, try to leave  
without buying a few dozen!

BY [MURILEE MARTIN](#)

I just spent a couple of weeks in Japan, my first trip there since I wrote about the Toyota Century assembly line five years back. Back in 2019, I bought some model car kits to bring home, but came to realize later on that I had failed to document just how *thoroughly insane* the kit selection is in that nation of fanatically devoted model builders.

To give you the idea, I dropped into the famous Yodobashi Camera store in Tokyo's Akihabara neighborhood, whose sixth floor boasts thousands of tempting car models, and photographed *all* of those kits.



Most of the kits found on the toy floor of the Akiba Yodobashi aren't even cars; if you seek to build a room-sized diorama of, say, the Battle of

Tsushima, this place offers all the ship kits you'd need.



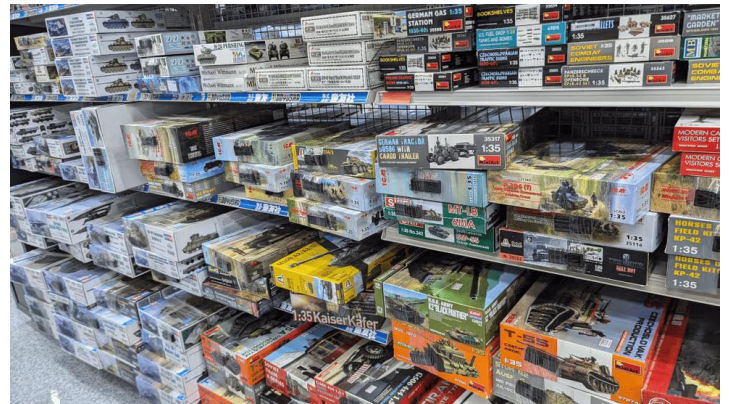
MURILEE MARTIN

You might consider some of Yodobashi's countless military vehicle kits to be cars, technically speaking, but I'm limiting this article to ordinary cars, trucks and related vehicles.



MURILEE MARTIN

Take my word for it, the selection of two-wheeler kits is staggering.



MURILEE MARTIN

Then there are the invertebrate and dinosaur kits. You could get into real trouble in this place!



MURILEE MARTIN

Likewise, there's an entire long aisle devoted to motorcycle and scooter kits. Cool as the Aoshima 1/12-scale Honda Motocompo and Monkey kits are, out-of-control scope creep of this article had to be prevented.



MURILEE MARTIN

It took a great deal of willpower to put this model crayfish back on the shelf, I tell you what.



MURILEE MARTIN

What makes this kit selection even better is that the dollar-to-yen exchange rate is extremely favorable for those bringing their greenbacks to Japan.



MURILEE MARTIN

Most of these kits list for ¥1,500 to ¥2,500, which comes to about \$10 to \$16 at the time of this writing. Yodobashi will sell them to you tax-free, too, provided you show your (non-Japanese) passport and promise not to resell them in Japan.



MURILEE MARTIN

Of course, the super-high-quality and/or extra-big kits sell for a lot more. I agonized over this incredible 1/32 Bandai reproduction of the "Ippiki Momojiro" dekotora truck from the 1970s Torakku Yaro movie series, the ¥17,620 (\$115) price tag for which still seemed like a

steal. Yes, Bandai makes a whole line of massive kits of the Torakku Yaro trucks—collect them all!



MURILEE MARTIN

Considering that it took me several years to get around to building the Estima Police Interceptor (aka Cop Previa) kit, I knew that I'd never find time to build the orders-of-magnitude-more-complex Ippiki Momojiro dekotora kit, so I left it there. I may yet pay big yen to acquire a genuine NOS Mad Police Destroyer Nissan Cedric kit, though, and *that* would get assembled right away.



MURILEE MARTIN

In fact, I visited some of the vintage-kit shops around Akihabara in search of Mad Police kits. Store employees were impressed that I was hip enough to seek out those kits, but they had none in stock. This is the Leonardo LG store, which I'll write more about later on.



MURILEE MARTIN

Instead, I had to content myself with Yodobashi's numerous kei van kits. I wanted to get a kit I could build as a likeness of my daily-driven 1996 Subaru Sambar Dias II Maleza Super Charger, but how could anyone resist a Sambar fire truck kit?



MURILEE MARTIN

I'm sadly lacking in knowledge of manga and anime, which was a problem since Yodobashi's selection of kits from those universes is *overwhelming*, to put it mildly. However, I *did* run across a big section of Initial D kits, which are in a different section of the store than the regular car models.



MURILEE MARTIN

They've got aftermarket wheels in 1/24 scale, so you can customize your kits. And you should.



MURILEE MARTIN

How about pre-customized kits, of which there are plenty? No model collection is truly complete without at least one apiece slammed JDM Toyota Hilux and Datsun 720 pickups.



MURILEE MARTIN

As you'd expect, this place is fully stocked with paint and tools. You're not supposed to bring flammable liquids on airplanes, unfortunately.



To add to the sensory overload, Yodobashi blasts their theme song (which borrows the tune from the Battle Hymn of the Republic) incessantly over the store's PA system, interspersed with descriptions of the floor guide in Japanese, English, and Mandarin. You'll get used to it, maybe.

MURILEE MARTIN

Do Tamiya R/C cars count as model kits? Of course they do.

This content is imported from YouTube. You may be able to find the same content in another format, or you may be able to find more information, at their web site.



MURILEE MARTIN

Keep in mind that Yodobashi Camera is just one of many shops selling car model kits in the Akihabara neighborhood. I suggest bringing an extra suitcase just for kits when you visit Japan.

Dr. V was perusing Spotlight Hobbies website and he came across "[Is there a site that has cover photos and indexes for the various model magazines? \\*NM\\*](#)" -- curb -- 12/5/2025. He then noted ...

- [Be sure to look around. There are numerous titles available on this website. Not just "Modeling". \\*NM\\*](#) (Rich/NV -- 12/5/2025, 7:05 pm)

WOW! Model Car Trivia **Model and Slot Cars -- Magazine Covers 1959 to 2000**

\ [http://wwwboard2.spotlighthobbies.com/cgi-bin/bbs62x/webbbs\\_config.pl?md=index;page=1](http://wwwboard2.spotlighthobbies.com/cgi-bin/bbs62x/webbbs_config.pl?md=index;page=1)

[Site Map](#)

TITLES

[Auto World Catalogs](#) (included below)

[Car Model](#)

[Model Car & Racing](#)

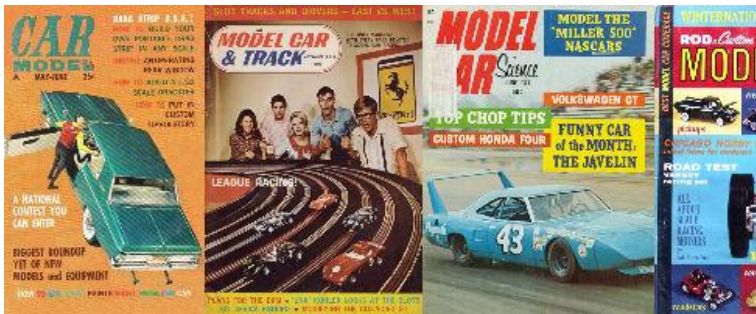
[Model Car & Track](#)

[Model Car Science](#)

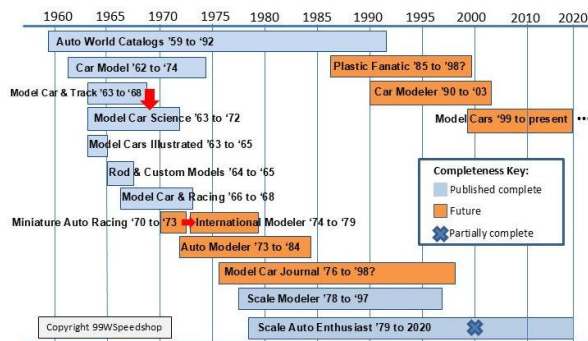
[Model Cars Illustrated](#)

[Rod and Custom Models](#)

[Scale Auto Enthusiast](#)



The images of magazine covers are accessed by the links to the above left. Simply click on each magazine title to see the covers.



**MODEL CAR KITS:**

There is a long history of car model building that goes back to the time when the automobile first appeared. Collectors and kids wanted scale models of the real thing. Early hand-built models might have been made from

brass, tin, or wood. Toy manufacturers got in the game, and scale cars and trucks were made of diecast metal by companies such as Arcade and Tootsie Toy. In the late 1930s, automobile manufacturers hired companies such as Banthrico, AMT, Ideal and PMC to build scale models of Detroit designs. Made from metal or plastic, these were given to car buyers and their kids to promote their new designs and generate orders for new cars. They were called promotional.

The first model car kits were made by Ace and Berkeley and used wood components. But Revell pioneered the plastic kit with their 1910 Maxwell model that was essentially a pull toy.

Revell later launched the Highway Pioneers series (under various licensed manufactures. In 1957, Budd Anderson at AMT had the idea to offer plastic promotional models as kits along with extra customizing features. This allowed kids and adults to be creative and build any car they wanted. (AMT &/or SMP both hardtops & Conv.) Other kit manufacturers such as Revell, Monogram and Jo-Han were in hot pursuit. These manufacturers used the above magazine titles at the left to promote their products. (It was an exciting era)

**SLOT CARS:**

Just as with model car kits, slot cars experienced the same rapid evolutions in technology and materials. Lionel pioneered an electric racing set that was offered from 1912 to 1915. Marklin in Germany had a racing set from 1934 to 1938, and Marx in the U.S. introduced the Electric Speedway in 1938. But after WW2, numerous innovations occurred in the U.K. including a monorail system, slot car tracks and both 1/32 and HO scale designs. Scalextric was introduced at a toy show in 1957, and other U.K. companies refined designs and introduced products - VIP, Wrenn, SRM, Airfix and others.

In the U.S., the first commercial track appeared in Kalamazoo Michigan in 1956. This grew to an estimated 3,000 to 5,000 commercial tracks by 1966. American manufacturers such as Aurora, Strombecker, AC Gilbert, Eldon, Revell and others introduced home racing sets, component parts and slot cars. Aurora's offering was HO scale and based on the design by Derek Brand in the U.K.

In 1963, the *Wall Street Journal* estimated the market size of the hobby at \$100 Million USD.

**THE GOLDEN AGE:**

The stage was set for the golden era of model cars and slot cars in the U.S as indicated in the timeline below. The post WW2 kids ("boomers") who were born in 1946 and thereafter were reaching age 10 just as these plastic models and slot cars were widely available. The demand was high, and these magazines featured many "how to" articles and provided ideas for model construction. This boom was further enhanced by the America's long term love affair with the automobile and the huge interest in hot rods, customs, muscle cars, sports cars and motor racing that boomed after WW2.

This boom lasted until the mid-1970s, when interest declined to a point where just the true hobbyists were left. This decline has been attributable to many factors: (1) the rising cost of plastics; (2) the emergence of radio controlled cars; (3) the effect of Japanese made tin toys; (4) the changing interests of the kids born late in the baby boom (which ended in 1964), and, (5) in general, the end of an exciting era as gas prices, safety and emissions regulations impacted the character of automobiles.

The above timeline shows the major titles dedicated to car models and slot cars. Note that some automotive magazines such as *Rod & Custom* and *Car Craft* also had feature stories and product information on model cars.

NOTE IAE with Copyrights, CONTACT US @

Email: [info\\_99wspeedshop@yahoo.com](mailto:info_99wspeedshop@yahoo.com)

Copyright 99W Speed, R.H. Carroll, Lake Oswego, OR

For this MCB article Dr.V highlights [Auto World Catalogs OVERVIEW:](#)

*Auto World* catalog was published either annually or semi-annually by [Oscar Koveleski](#) in Scranton Pennsylvania. Mr Koveleski, a sports car racer, started a retail mail order service for models, tools, paints, supplies, slot cars and even custom bicycle parts. In the late 1950s and early 1960s, this was the only way for kids to get the latest models. That's how I got mine!!

Oscar started the business when he would take model kits of his Father's called "Li'l Old Timers" on his racing circuit. People repeatedly purchased from him and asked for more. He recognized the potential and created his first catalog in 1959. Besides his own catalog, he advertised heavily in other car and model magazines. These catalogs were readily available across the U.S., and early versions cost just \$.25.

As the hobby exploded, Mr. Koveleski got many letters from his target market of 12-15 year olds (including Dr. V) for information on modeling techniques. From this, he started *Car Model* magazine, the first in the market.

During this time period, Dr. V would vacation in the Pocono's each summer, and visit [Oscar Koveleski](#) in Scranton Pennsylvania on each visit... WOW MEMORIES!

**PUBLICATION DATA:**

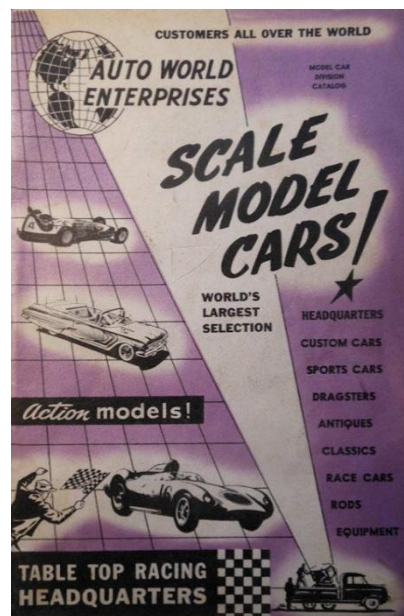
The publisher did NOT provide circulation data to a publishing compendia like *N.W. Ayer*.

**CONTENT COMPLETENESS:**

A total of 41 issues was printed from 1958 to 1992. We are missing only issue number 42, the last one.



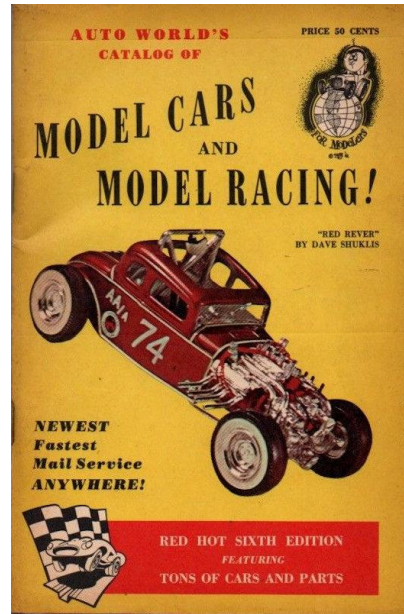
Unnumbered 1



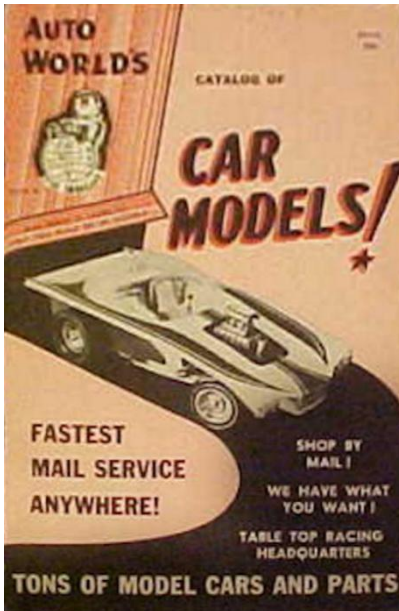
Unnumbered 2



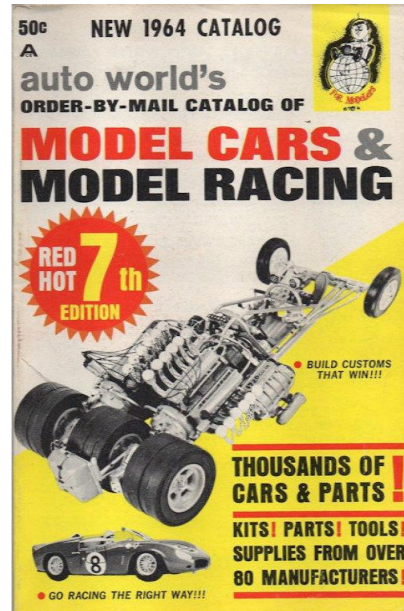
Unnumbered 3



1963 No 6



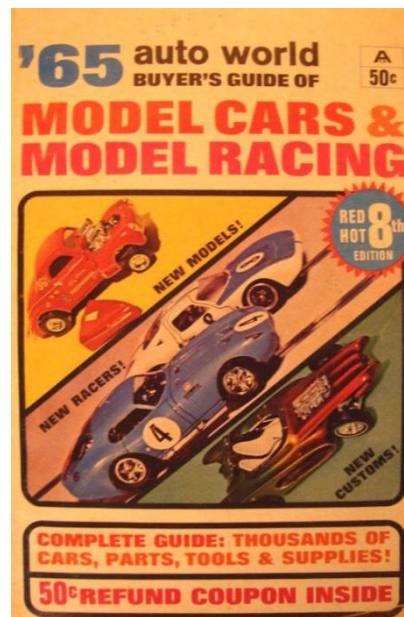
Unnumber 4



1964 No 7





1962




1965 No 8

**NEW** 1965 1/2 auto world **50c**  
**MODEL CAR & RACING CATALOG**

**NEW MODELS!**  


**NEW RACERS!**  


**NEW CUSTOMS!**  



**RED HOT 9th EDITION**


**COMPLETE GUIDE: THOUSANDS OF CARS PARTS AND SUPPLIES FROM 90 DIFFERENT MAKERS**

**50c REFUND COUPON INSIDE**

1965-1/2 No 9

**50c** MODELERS! WIN A MINI-BIKE! (SEE PAGE 99)  
 auto world **66 MODEL CARS & MODEL RACING CATALOG**

**66 CUSTOMS AND DRAG MODELS**  


**66 RACE CARS AND SETS**  


**50c REFUND ON FIRST ORDER**

**E-Z "FIND & FIT" INDEX** FIND WHAT YOU WANT IN HERE! SAVE TIME & MONEY!

1966 No 10

**50c** WIN A YAMAHA! (SEE PAGE 99)  
 auto world **66 1 MODEL CARS & 2 MODEL RACING CATALOG**

**NEW CUSTOMS / DRAG / SPORTS MODELS**  


**ALL BRASS CARS? NEW KITS!**  


**NEW RACE CARS AND SETS!**  


**50c REFUND ON FIRST ORDER**


**SEE INDEX PAGE 4** WE HAVE WHAT YOU WANT! SAVE TIME AND MONEY!

1966-1/2 No 11

**12TH EDITION 1967 50c**  
 SEE INDEX PAGE 4 ALL THE NEW MODEL CARS!  
**'67 auto world MODEL CARS**

**NEW SCALE MODELS**  


**NEW RACE CARS/SETS**  


**NEW SCENERY/TRACKS**  


**50c REFUND ON FIRST ORDER**


**WE HAVE WHAT YOU WANT! SAVE TIME AND MONEY!**

1967 No 12

unpublished  
 unpublished  
 unpublished  
 unpublished  
 unpublished  
 unpublished  
 unpublished

1967 No 13

**SPECIAL 14TH EDITION 1967 50c**  
 SEE INDEX PAGE 4 ALL THE NEW MODEL CARS!  
 FALL-WINTER EDITION **'67 auto world MODEL CARS**

**NEW SCALE MODELS**  


**NEW HOME TRACKS**  


**50c REFUND ON FIRST ORDER**

**WE HAVE WHAT YOU WANT! SAVE TIME AND MONEY!**

1967 No 14

SEE INDEX PAGE 4

SPRING/SUMMER ISSUE! EXTRA PAGES! 60¢

15TH EDITION

# '68 auto world MODEL CARS

NEW STP TURBINE IN 1/20TH SCALE!

NEW ALL THE NEW MODEL CARS!

60¢ REFUND ON FIRST ORDER

NEW CARS - TRACKS - BODIES IN HO 1/32 - 1/24 SCALES!

EVERYTHING FOR THE MODEL CAR BUYER!

1968 No 15

aw auto world 18th EDITION 60¢

# '70 MODEL CARS

THE WORLD'S LARGEST ENCYCLOPEDIA/CATALOG OF MODEL CARS

WIN TROPHIES - \$\$\$ ENTER FUNNY CAR CONTEST

Models of all types...

ENTER THE HO CHAMPIONSHIPS

60¢ REFUND ON FIRST ORDER

CHOPPER BIKE PARTS..

1/32 - 1/24 slot racing cars..

Gas powered models..

auto world HAS WHAT YOU WANT!

1970 No 18

NEW MODEL CARS! 18TH EDITION 60¢

# '68 1/2 auto world MODEL CARS

ALL KINDS OF MODELS

60¢ REFUND ON FIRST ORDER

NEW MODEL CAR RACING HEADQUARTERS

auto world HAS WHAT YOU WANT!

1968-1/2 No 16

aw 19th EDITION 60¢

# auto world 1970 MODEL CARS

THE WORLD'S LARGEST ENCYCLOPEDIA/CATALOG OF MODEL CARS

1970 SPECIAL SUMMER ISSUE

PLASTIC MODEL KITS

New! HO CHOPPER BIKE PARTS

WE SHIP ANYWHERE! PLASTIC CAR KITS IN EVERY SCALE

New! SLOT CARS HO 1/32 1/24

60¢ REFUND ON FIRST ORDER

CHOPPER BIKE PARTS

auto world HAS WHAT YOU WANT!

1970 Summer No 19

auto world aw 17th EDITION 60¢

# '69 MODEL CARS

THE WORLD'S LARGEST ENCYCLOPEDIA/CATALOG OF MODEL CARS

WIN \$100! ENTER AUTO WORLD'S MODEL CONTEST!

NEW! MODELS OF ALL TYPES

60¢ REFUND ON FIRST ORDER

ALL MODELS DECORATED WITH AUTO WORLD DECALS

NEW! HO CARS

1/32 - 1/24 CARS

auto world HAS WHAT YOU WANT!

1969 No 17

SEE INDEX PAGE 4

1971 - 20th EDITION 60¢

# auto world MODEL CARS

SHIP AT AUTO WORLD - WORLD'S LARGEST AUTO HOBBY HOUSE

New! RC CARS

New! FUNNY CARS

60¢ REFUND ON FIRST ORDER

BIG AMAZING MODELS for DESK and DISPLAY

The BEST in HO and 1/32 SCALE for HOME RACE TRACKS

NEW HO & 1/32 CARS

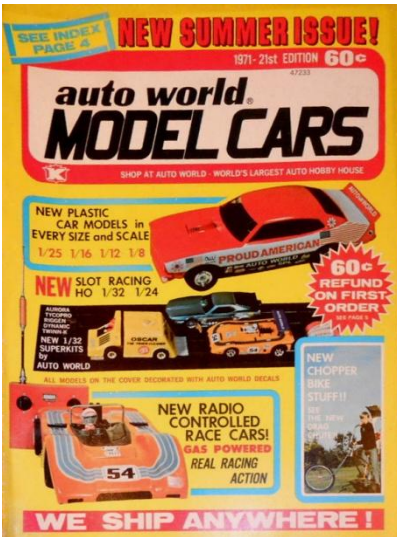
THE BEST RACE SETS

TOOLS & SUPPLIES

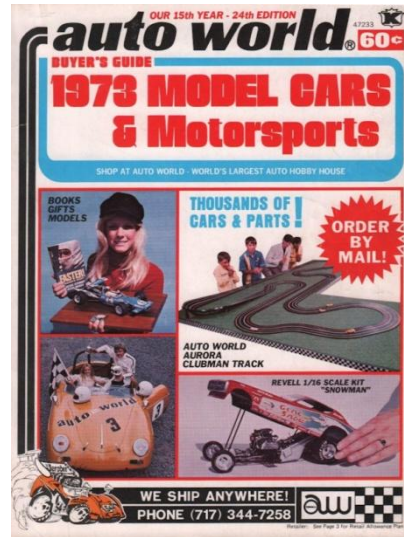
NEW LOOKUP PARTS

WE SHIP ANYWHERE

1971 No 20



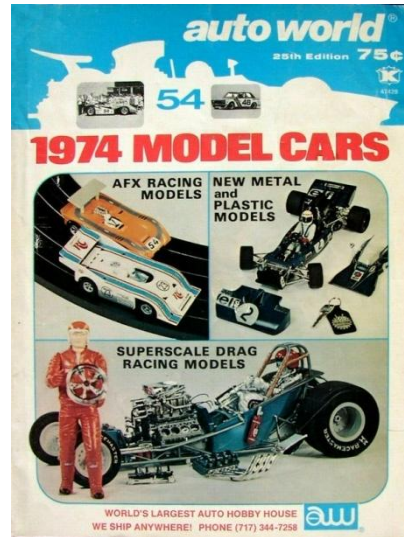
1971 Summer No 21



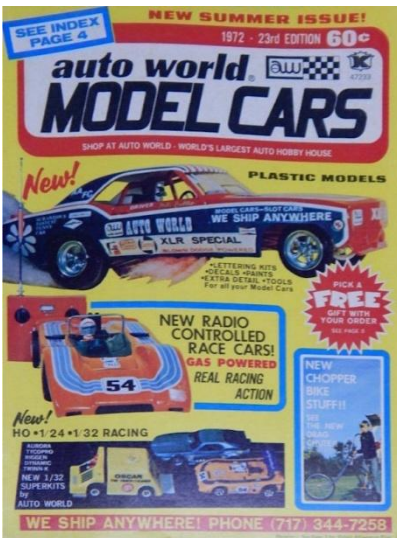
1973 No 24



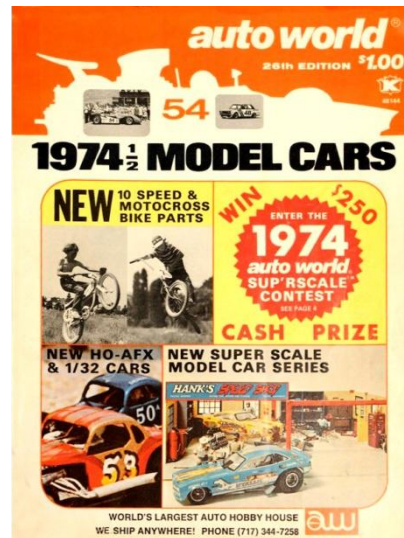
1972 No 22



1974 No 25



1972 No 23



1974-1/2 No 26

**auto world** 27th EDITION \$1.00  
**1975 MODEL CARS**

54

**WIN \$50**  
 ENTER AUTO WORLD'S MODEL CAR CONTEST!  
 JOIN AUTO WORLD'S MODELER'S CLUB!

**NEW** MAGNETIC FORCE PAN FOR ALL AFX CARS!

**NEW MODEL CAR KITS**

**NEW VAN MODELS • TRUCKS • UNUSUAL MODELS**

**SLOT CARS**

WORLD'S LARGEST AUTO HOBBY HOUSE  
 WE SHIP ANYWHERE! PHONE (717) 344-7258 **aw**

1975 No 27

**NEW MODEL CARS • TRUCKS • VANS**

**auto world** 30th EDITION \$1.25  
**1978 MODEL CARS**

AMERICA'S ONE-STOP MODEL CAR HEADQUARTERS

**WIN \$50** ENTER AUTO WORLD'S MODEL CONTEST SEE PAGE 7

**NEW RADIO CONTROL CARS!**

**NEW SUPERSCALE MODELS!**

**10 PAGES R/C CARS!** ALL THE LATEST MODELS!

**HOW TO WIN A 24-HOUR AFX RACE AND SET A WORLD RECORD** — BY JOE LUBINSKI 24-HOUR AFX WORLD CHAMPION TEAM MEMBER

**NEW MODEL CAR KITS!**

**ELECTRONIC GAMES!**

**NEW COLLECTOR'S MODELS!**

...AND MORE!

SHOP AT AUTO WORLD  
 WE SHIP ANYWHERE! PHONE (717) 344-7258 **aw**

1978 No 30

**auto world** 28th EDITION \$1.00  
**1976 MODEL CARS**

MODEL VEHICLE CATALOG/HANDBOOK

54

**WIN \$50 CASH**  
 ENTER AUTO WORLD'S MODEL CAR CONTEST

**★ARTICLES★**

HOW TO LETTER MODEL CARS  
 HOW TO START A MODEL CLUB  
 METALFLAKE CAR PAINTING & STRIPING  
 ENGINE DETAILING  
 MAKE YOUR OWN MAGNETIC CARS  
 HOPPIN' UP YOUR AFX RACING CARS  
 WATKINS GLEN AFX LAYOUT  
 PEN PAL LIST

**NEW AFX CARS & PARTS**

**BIG WORLD CHAMPIONSHIP MODELS**

**AND MORE**

WE HAVE WHAT YOU WANT  
 WE SHIP ANYWHERE! PHONE (717) 344-7258 **aw**

1976 No 28

**NEW MODEL CARS • TRUCKS • VANS**

**auto world** CATALOG No. 31 \$1.50  
**1979 MODEL CARS**

AMERICA'S ONE-STOP MODEL CAR HEADQUARTERS

**WIN \$50** ENTER AUTO WORLD'S MODEL CONTEST SEE PAGE 7

**NEW RADIO CONTROL CARS!**

**NEW! AFX ELECTRONIC TIMER!**

**NEW BIG SCALE TAMIYA MODELS**

**NEW AFX RACING CARS AND PARTS**

RACE 4 RC CARS AT A TIME — \$59.50

RACING JACKETS AND PATCHES

ALL SPORTS DIGITAL STOPWATCH — \$29.95

...AND MORE!

SHOP AT AUTO WORLD  
 WE SHIP ANYWHERE! PHONE (717) 344-7258 **aw**

1979 No 31

**NEW MODEL CARS • TRUCKS • VANS**

**auto world** 29th EDITION \$1.00  
**1977 MODEL CARS**

AMERICA'S ONE-STOP MODEL CAR HEADQUARTERS

**WIN \$50 CASH!** ENTER AUTO WORLD'S MODEL CONTEST SEE PAGE 5

**NEW AFX RACERS!** **NEW GT RACERS!**

**NEW DRAG RACERS** **ROUNDY POUNDERS**

**INSIDE!**  
 300 PLACES TO RACE SLOT CARS!  
 RADIO CONTROL CAR CLUB LIST!

SHOP AT AUTO WORLD  
 WE SHIP ANYWHERE! PHONE (717) 344-7258 **aw**

1977 No 29

**MODEL CARS • TRUCKS**

**auto world** CATALOG No. 22 \$1.95  
**1980 MODEL CARS**

AMERICA'S ONE-STOP MODEL CAR HEADQUARTERS

**5** BIG MODEL CONTESTS YOU CAN ENTER

**AFX "WORLD LAND SPEED RECORD" ATTEMPT?**

**IN THIS ISSUE!**  
 PHOTOS, HOW-TO'S BY SOME OF USA'S TOP MODELERS...

**YOUR BEST BUYS IN**  
 • AURORA AFX  
 • RADIO CONTROL CARS  
 • MODEL CAR KITS  
 • TRUCK MODEL KITS  
 • SUPPLIES & TOOLS

**NEW MODEL KITS**

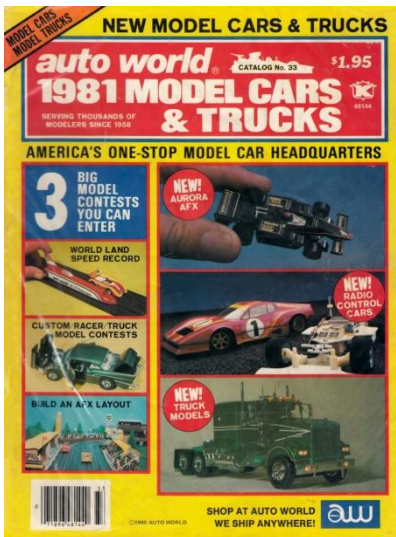
**MONEY BACK GUARANTEE!**

...AND MORE!

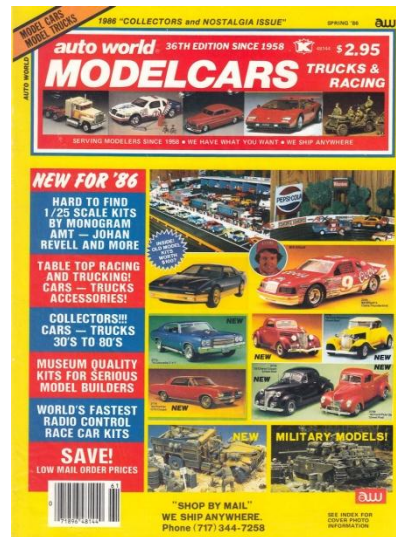
RE-DESIGN AND CUSTOMIZE

SHOP AT AUTO WORLD  
 WE SHIP ANYWHERE! **aw**

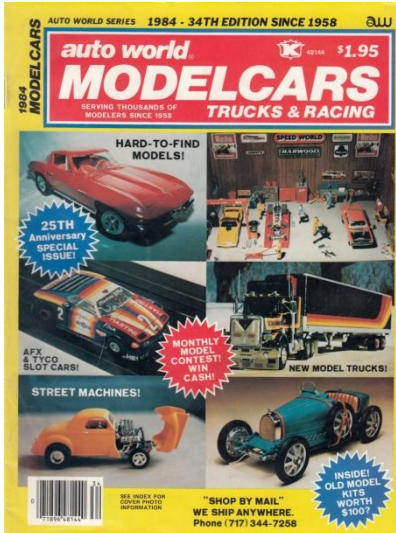
1980 No 32



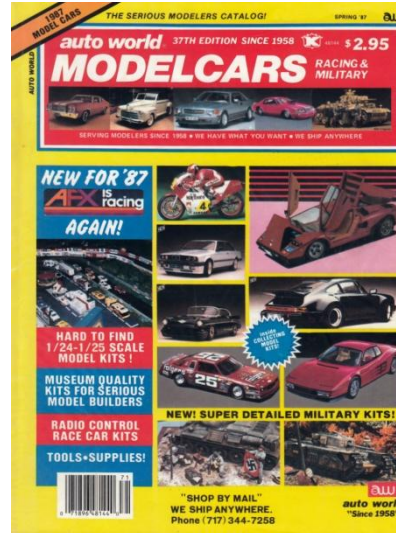
1981 No 33



1986 No 36



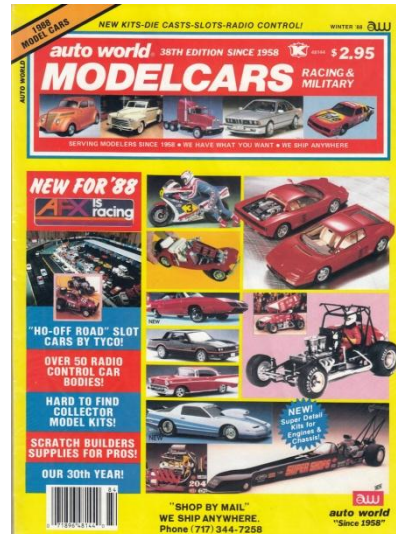
1984 No 34



1987 No 37



1985 No 35



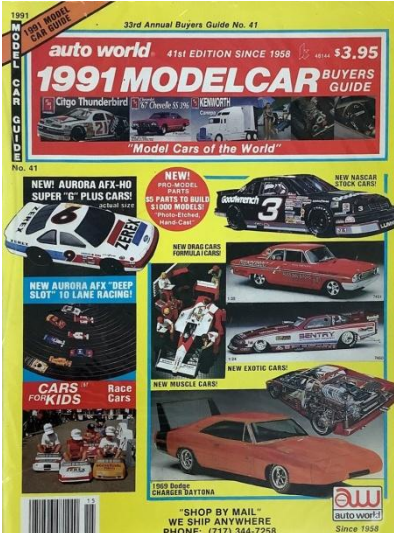
1988 No 38



1989 No 39



1990 No 40



1991 No 41

1992 No 42 Last issue (Dr. V believes he has a copy but cannot remember where he has it)

DR.V also remembers visiting a local Farmingdale stationary store twice a year to purchase the latest Auto World catalog. The store owner would put the latest catalog aside for me! (Consider this bribery...since I would also purchase other model related magazines...)

Hope the LIARS (& others) can enjoy Dr.V's memories as well! Enjoy your day, surfing the embedded links. Bill (Dr. V) Murray

Dr. V suggests that the LIARS revive the Goldie Oldies of the LIARS group visits to model shows via a LIARS bus...perhaps in 2026, LIARS could rent a stretched limo...here is a candidate that is For Sale... (Well we did turn a show profit I think...)

1997 Lincoln Town Car Excalibur-Style Limousine



*Sales pitch:* It's no stretch (ahem) to say the original Excalibur limousine was one of the only factory-built limos of its kind—not a traditional “cut-and-stretch” job, but a Neoclassic car born with a long torso and a silver spoon in hand.

Roughly 3,500 examples were built and rides on a 1997 Lincoln Town Car chassis. (It was refurbished in 2011, and has traveled nearly 200k miles.... which equates to how many Model shows? WOW!

*Side note...DR. V was introduced to the LIARS @ NNL East, when he noticed a bus arrive...loaded with LIARS! Eventually, Dr. V elected to join this rowdy modelers' group. Today, we no longer have a designated commercial licensed driver... so a stretched limo fills the bill! Over to the LIARS board to consider a 2026 goal...*

**An alternative**

[https://bringatrailer.com/listing/go-kart-62/?utm\\_source=dm&utm\\_medium=email&utm\\_campaign=2025-12-08](https://bringatrailer.com/listing/go-kart-62/?utm_source=dm&utm_medium=email&utm_campaign=2025-12-08)

L'Autopède Bus Ride & Power Car Go-Kart (built in the style of a European tour bus for use as an amusement

park ride-in...well we are replica oriented... car modified to be linked to a ride-on motorized power unit. this go-kart is now offered by the seller on behalf of the owner in Glen Cove, New York.)



The bus and power car measure 119" long by 45" wide by 47.5" tall.



The interior of the bus is accessed through a hinged side door. Inside, there is a black carpeted floor mat, two white steering wheels on a matching dash, and a bench and five individual seats trimmed in red vinyl upholstery.



The bus was configured to be driven from the power unit, & Mickey is provided with a bolstered seat and a black steering wheel. Over to the LIARS Board...

### Next... Model Car Prices...

Dr. V has been interested in Model Car: kits, built ups, etc. since he & his best friend won an ATT (NY Telephone) 3-legged race in the fall of 1957! Why, because the winner was given an AMT 1958 Pontiac model ... (Guess what, Dr. V's

best friend parents had just purchased a new 1958 Pontiac! WOW! WOW applies when Dr. V purchased their 1:1 variant!

Dr. V elected to pursue obtaining other AMT (who also released as them as SMP HT) models...much to his eventual wife's ... fill in the blank! Speed forward to today...

Dr. V started out buying (model car kits whose retail was \$1.39 plus tax. He purchased them for about \$1.00 plus tax...

Last year, OLLIES who recently opened stores on LI was selling models for \$7.98...Today on sale they are at least twice that! NOW THAT IS INFLATION!

**Now consider purchasing a model precast model...**

Let's explore 2 goodies...

One deals with today's prices

How could you consider purchasing a vehicle advertised in a car auction that turns out to be a 1/2 scale model Ferrari without a drivetrain for over \$15000.! Dr. V could not...read on...

<https://bringatrailer.com/listing/scale-model-55/Half-Scale-Ferrari-SF-25-Display-Model>

This scale model depicts a Ferrari SF-25 piloted by Lewis Hamilton during the 2025 Formula 1 season. The fiberglass and carbon-fiber replica wears a red livery with a white stripe and features front and rear wings, Pirelli-branded tires, a cockpit halo, and a multifunction steering wheel.



The bodywork is finished in red with sponsor logos from brands such as HP, Peroni, and Shell, among others. Additional details include a front wing, sculpted side pods, a dual-plane rear wing, and a cockpit halo. A multifunction steering wheel is stationed in the cockpit.



The tires are decorated in white to resemble Pirelli P Zero racing slicks and are mounted on black, flat-face wheels. Modeled suspension arms secure the wheels to the model. The model has mounting points on its underside.

It measures about 37 inches wide by 90 inches long and weighs 66 pounds.

The other option deals with 1:18 Ferrari 250 GTO, 250 LM, and 330 P4 Scale Models by Amalgam Collection for sale on BaT Auctions - sold for \$7,300 on December 3, 2025 (Lot #222,193)

<https://bringatrailer.com/listing/scale-models-16/>

These three 1:18-scale Ferrari models were produced by Amalgam Collection in England and depict a 250 GTO, 250 LM, and 330 P4. Each model measures around 9" long, is constructed of resin, and is finished in red over a detailed interior. Details are rendered through a mix of castings, photo-etchings, and CNC-machined metal components.



The 250 GTO is a model of chassis 3705GT, which was raced by Pierre Noblet and Jean Guichet at the 1962 24 Hours of Le Mans. A piece of rear trim needs to be re-glued to this model, and the owner states this can be done at request before the models are shipped.



The 250 LM was built after scanning chassis 3987GT, which Masten Gregory and Jochen Rindt raced to victory in the 1965 running of the 24 Hours of Le Mans.

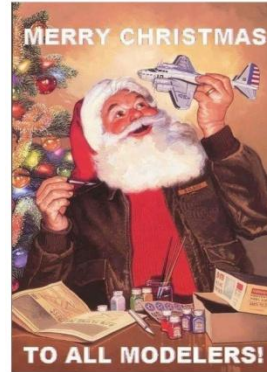


Chassis 0858 was scanned to create the 330 P4 model, depicting the car raced to second position by Ludovico Scarfiotti and Mike Parkes in the 24 Hours of Le Mans at Circuit de la Sarthe on June 11, 1967



(GEE) A removable plexiglass cover, a display base, and the manufacturer's packaging accompanied each model. Over for LIARS Consideration...Next...enjoy our upcoming holiday! Merry Christmas Happy Hanukah or whatever... !

## Seriously?



I bought you a present from IKEA, ... a log cabin...



Then there is...

**THE NAVIGATOR**  
 IPMS REGION 6 | ALAMO SQUADRON | SAN ANTONIO, TX  
 DECEMBER 2025 Edition *Season's Greetings!*

**Confessions of a Kit Hoarder**  
 By Julio A. Caro [Back to Home Page](#)



*Above are some actual photos of some of my stash...*



There—I've said it. It's out in the open now. No taking it back. My stash currently sits somewhere north of 300 kits, which, by my calculations, would take me roughly 127 years to complete—assuming I stop buying new ones, which, of course, I won't.

It started innocently enough. One or two kits here and there, a "rainy day project," a "must-have subject," a "limited edition" I couldn't possibly pass up. Before I knew it, my stash had grown into a full-fledged squadron—no, a *wing*—of un-built treasures.

Every modeler I know seems to have the same affliction. We call it "future project syndrome." We tell ourselves we're *collectors*, not hoarders. We justify every purchase with that classic line: "I'll build it someday." But deep down, we know "someday" is doing a lot of heavy lifting in that sentence.

We buy for all kinds of reasons: nostalgia, excitement, fear of missing out, or just because the box art looks too good to pass up. We buy some kits because they remind us of our childhood, others because they're "rare," and a few simply because they were on sale—our version of "financial responsibility."

The funny thing is, I don't feel bad about it. That stash, brings me joy. It's a museum of possibilities, a warehouse of inspiration. On any given day, I can walk in, look around, and think, "Maybe next weekend..."

Of course, next weekend will come and go, and I'll probably buy another kit instead. But that's okay; in this hobby, the stash isn't a problem—it's part of the fun!

And besides, if I ever do run out of time, at least I'll leave behind one heck of an estate sale for some lucky modeler!



**WANTED:** AMT 1969 LINCOLN unbuilt kit. Will buy or have many vintage kits available for trade.

Contact Gary Weickart at 631-581-5834 or [gweickart@aol.com](mailto:gweickart@aol.com).

**WANTED:** Large diameter wheels, tires, and disc brakes from Revell/AMT/Tamiya/Aoshima/ect. kits. 1/24<sup>th</sup> and 1/25<sup>th</sup> scale. ( )

**WANTED:** Modular and modern motors like LS1s, HEMIs, DOHC 5.4 Cobra motors, import motors like Toyota 2JZ and Nissan Skyline RB. 1/24<sup>th</sup> and 1/25<sup>th</sup> scale.

**WANTED:** Vortech style superchargers, blower superchargers from 2007/2010 Shelby GT500 and Revell Ford Mustang Mach III concept car, and turbochargers. 1/24<sup>th</sup> and 1/25<sup>th</sup> scale.

Contact Richard Manri @ 631-589-6876 or his email [picorro93@gmail.com](mailto:picorro93@gmail.com) to negotiate price or trade for the three above.

**Model Mercantile Market**

**"Wanted or For Sale" section...**

**WANTED:** Stock wheel and tire for AMT '64 Chevrolet Covair annual kit or promo.

Contact John Heyer at [oldie383@gmail.com](mailto:oldie383@gmail.com) or his cell phone 631-575-6923.

**WANTED:** CAR MODEL Magazine May 1974 issue. Will pay \$20 for it in excellent condition.

**See first page for more about "non-existent scenes" from what was supposed to be the November 2025 mtg.**

**LIARS Annual (2025) INPUT AND PROFILE SHEET:**

Here is your chance to have some input into this club without having everyone know where it came from. If you have a

**suggestion, an idea, or a problem you would like to discuss please put it in writing on this sheet and it will be discussed at the next meeting. Please bring your filled out sheet with you, or you can email it to your editors email address on the first page header. ALL subjects and**

**suggestions will be brought up in front of the club.**

***YOU DO NOT HAVE TO SIGN THIS SHEET.***

**LIARS Profile: (name)** \_\_\_\_\_ **(Can be your LIARS nickname or anonymous panhandle...)**

- **How long have you been building models?** \_\_\_\_\_
- **How long have you been a member of LIARS?** \_\_\_\_\_
- **What do you usually build?** \_\_\_\_\_
- **Where do you usually build?** \_\_\_\_\_
- **How many models do you have?** \_\_\_\_\_
- **Have you ever had any failed builds that were scrapped or recycled for other projects?**  
\_\_\_\_\_
- **Have you ever parted out old finished builds and recycled their contents for new projects?**  
\_\_\_\_\_
- **How many unbuilt models do you have?** \_\_\_\_\_
- **What are your favorite 3 models you have built?** \_\_\_\_\_
- **Have you ever won an award for building a model?** \_\_\_\_\_
- **What 3 models should win an all time kit of the (last) century award?** \_\_\_\_\_
- **What 3 models are so horrible that you would buy them just to protect others from having to build them?**  
\_\_\_\_\_
- **What was the dumbest, most boneheaded mistake you've made in the past? (Can be model or general related)**  
\_\_\_\_\_
- **Was there any kit you regretted ever purchasing?**  
\_\_\_\_\_
- **What do you drive now?** \_\_\_\_\_
- **Are you bitter about anything?** \_\_\_\_\_
- **Are you saving your pennies for something fun to drive?** \_\_\_\_\_
- **With an unlimited budget, what 10 full size cars would you have in your garage?**  
\_\_\_\_\_
- **What (if any) person (living or dead) in the 1:1 automotive world would you like to meet?** \_\_\_\_\_
- **Do you go to model car shows?** \_\_\_\_\_
- **What are your favorite model car shows and why?** \_\_\_\_\_
- **Do you have kids & if so, do they share your passion?** \_\_\_\_\_
- **Did you build models with them?** \_\_\_\_\_

***LIARS Model Car Challenge, 35<sup>th</sup>  
anniversary, coming November 2026!  
Details and more TBA!***

---